

**RESOLUTION REVISING AND PRESCRIBING THE BOUNDARIES OF
THE NORTHEAST FIRE INSURANCE DISTRICT
(EMERGENCY SERVICES DEPARTMENT)**

WHEREAS The City View Volunteer Fire Department, Inc., and Walkertown Fire Department, Incorporated, have entered into an agreement to merge, effective January 1, 2020, with Walkertown Fire Department, Incorporated, being the surviving entity;

WHEREAS N.C.G.S. 153A-233 authorizes counties to revise and prescribe the boundaries thereof for insurance grading purposes;

WHEREAS the North Carolina Department of Insurance requires current mapping of fire insurance districts in order for property owners to be assigned the proper district and receive credit for rated service;

WHEREAS this proposed fire insurance district update is necessary to combine the insurance districts of the merged volunteer fire departments and will allow the Walkertown Fire Department to staff, equip, and meet the North Carolina Department of Insurance grading standards as a single fire district;

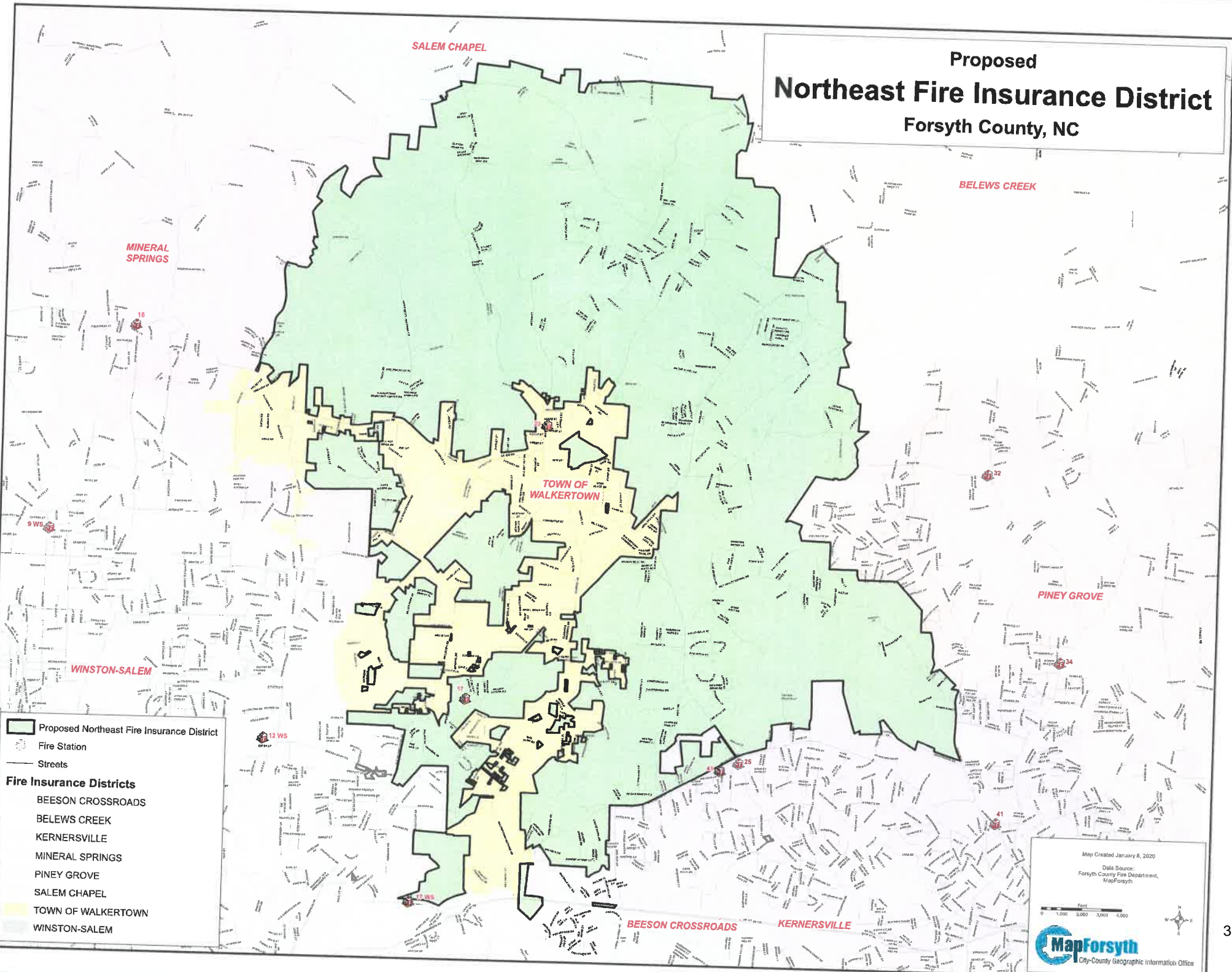
WHEREAS this revised map has been reviewed and approved by the Walkertown Fire Chief, Forsyth County Fire Marshal's Office and the North Carolina Department of Insurance; and

WHEREAS once this update is approved by the Board of Commissioners, the resolution and map will be submitted to the North Carolina Department of Insurance which will register the map with the Insurance Services Office;

NOW, THEREFORE, BE IT RESOLVED, that the Forsyth County Board of Commissioners hereby revises and prescribes the boundaries of the Northeast Fire Insurance District for insurance grading purposes, as set forth in Attachment A, which is incorporated herein by reference, pursuant to the provisions of North Carolina General Statutes, Section 153A-233.

Adopted this 19th day of March 2020.

Proposed Northeast Fire Insurance District Forsyth County, NC



Proposed Northeast Fire Insurance District
 Fire Station
 Streets

Fire Insurance Districts

- BEESON CROSSROADS
- BELEWS CREEK
- KERNERSVILLE
- MINERAL SPRINGS
- PINEY GROVE
- SALEM CHAPEL
- TOWN OF WALKERTOWN
- WINSTON-SALEM

Map Created January 8, 2020
 Data Source:
 Forsyth County Fire Department,
 MapForsyth

0 1,000 2,000 3,000 4,000 Feet

MapForsyth
 City-County Geographic Information Office